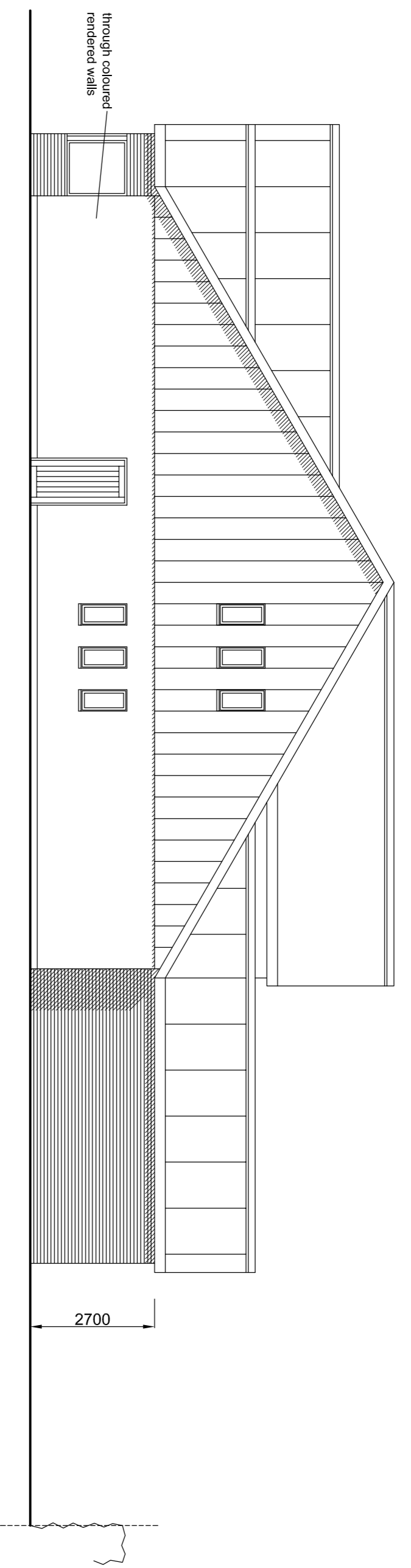
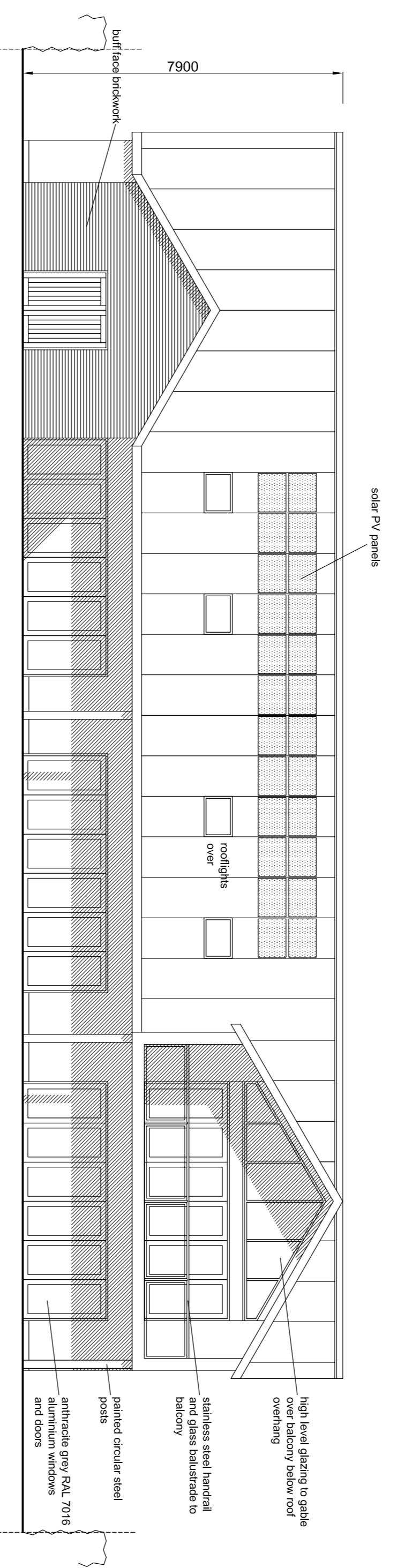


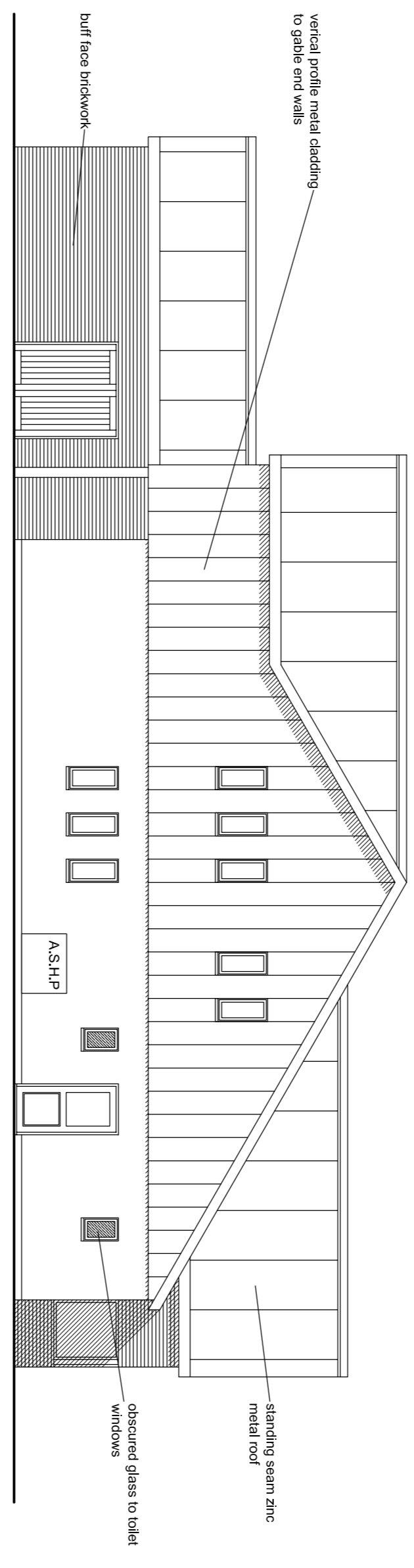
NORTH ELEVATION



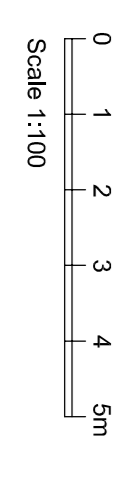
WEST ELEVATION



SOUTH ELEVATION



EAST ELEVATION



Rev. E - Boundaries indicated.  
 Rev. D - Planning application.  
 Rev. C - Updates following public consultation.  
 Rev. B - External store added and gates moved.  
 Rev. A - Amendments following pre-ppp advice.

03.11.21  
 10.09.21  
 25.05.21  
 05.04.21  
 26.02.21

Client: Replacement Parish Centre High Street, Warboys Cottingham Parish Council		Architect: Tibbett Architectural Services Unit 15 Watson's Yard, High Street Cottingham, Cambs, CB24 8RX e-mail: tibbett@live.co.uk Tel: 01954 253464 M: 07917 007592	
Scale:	1:100 @ A1	Date:	Feb. 2021
Drawn by:	SJT	Checked:	E
Project No:	19 / 1324 / PL.06	Rev:	